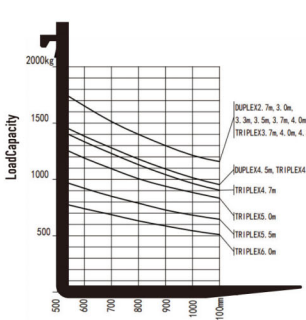
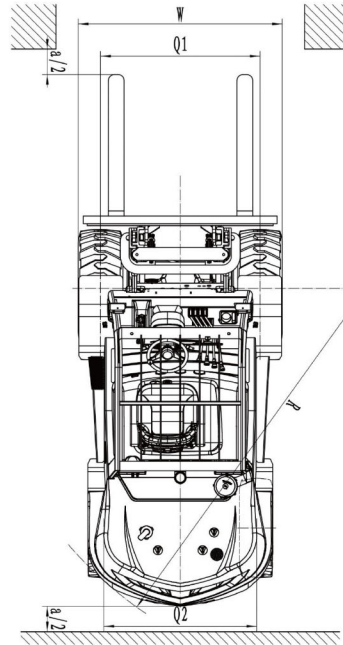
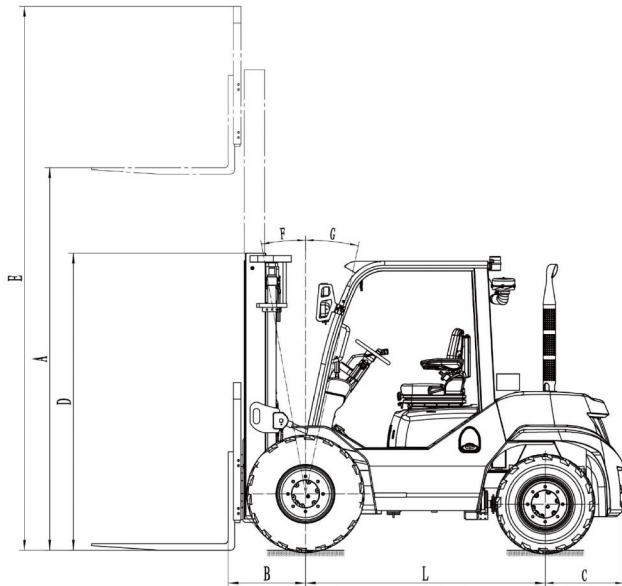
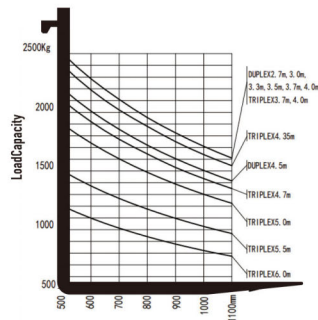


Rough Terrain Forklift

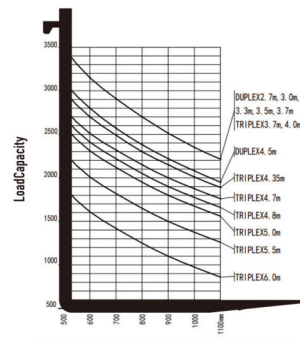
1.8-3.5T 2WD&4WD



1.8T Rough Terrain Forklift Load Curve



2.5T Rough Terrain Forklift Load Curve



3.5T Rough Terrain Forklift Load Curve



7200 White St.
Fort Worth TX 76135
United States
sales@maverickforklift.com
www.maverickforklift.com



FEATURES



Optimized Heat Dissipation

The introduction of an optimized heat dissipation channel significantly boosts efficiency by 30%. This design upgrade, coupled with a larger radiator, effectively mitigates potential overheating problems, ensuring consistent performance even under heavy workload or extended operation.



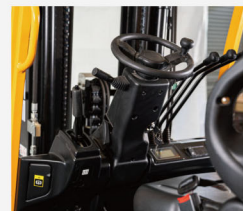
Enclosed Tyre Fender Design

The refined and enclosed tyre fender design acts as a shield, preventing mud and debris from infiltrating the forklift body. This enhancement not only maintains the cleanliness of the internal components but also reduces wear and tear on vital parts, enhancing longevity and reliability.



Improved Air Filtration System

A newly implemented air filtration system, strategically positioned and equipped with a higher-grade filter, effectively prevents dust and contaminants from infiltrating the air system. This advanced filtration design significantly improves air quality within the cabin, ensuring a healthier work environment.



Driver-Centric Design

The elevated steering wheel heightens ease of operation, providing a more ergonomic and comfortable driving experience. Additionally, the increased operational space and improved accessibility facilitate effortless entry and exit, enhancing overall operator comfort and reducing fatigue during prolonged usage.

KEY FEATURES AND ADVANTAGES

Rough Terrain Forklifts are engineered to excel in challenging terrains and demanding outdoor settings. Renowned for their rugged design and superior capabilities, these forklifts are tailored to provide exceptional performance and versatility across a spectrum of industrial and outdoor applications.

Terrain Mastery

Precision-engineered to navigate and conquer challenging terrains such as uneven landscapes, gravel, mud, and rugged surfaces. This design ensures stability and reliability even in the most demanding outdoor conditions.

Versatility Across Industries

Ideal for agricultural tasks, construction sites, forestry operations, and various other industrial applications. They offer high efficiency and reliability in material handling, loading, and transportation duties.

Advanced Chassis and Traction Systems

Equipped with specialized off-road chassis systems and high-traction tires, providing exceptional grip and flexibility to navigate diverse terrains effectively.

Built to Endure

Constructed with robust materials and reinforced components, ensuring resilience and continuous operation in harsh and unpredictable environments.



KEY FEATURES AND ADVANTAGES

Enhanced Ground Clearance

Featuring generous ground clearance, enabling these forklifts to effortlessly surmount obstacles and uneven surfaces, facilitating seamless operation in challenging conditions.

Power and Performance

Engineered with a potent powertrain capable of tackling steep inclines and rough terrains, ensuring consistent and efficient material handling across demanding landscapes.

Precise Handling and Stability

Designed for intricate terrains, offering precise handling and stability, empowering operators to navigate efficiently in diverse outdoor environments.

Customizable Attachments

Designed to accommodate various attachments, allowing customization for specific tasks, enhancing versatility, and operational efficiency.



Rough Terrain Forklifts are the epitome of durability, adaptability, and high performance, delivering dependable and efficient solutions for material handling across diverse landscapes and challenging outdoor conditions.



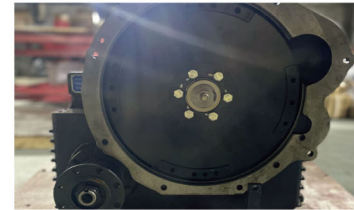
Improved Axle system

The improved axle design flawlessly resolves the oil leakage issue, allows either wheel to step over obstacles keeping the truck and load level.



Comfort-Oriented Features

The availability of a suspension seat option across the entire range ensures superior comfort for operators, minimizing the impact of vibrations and shocks experienced during operation, thereby reducing physical strain.



Enhanced Transmission

The integration of a 2-gear Forward / 1-gear Reverse transmission system optimizes operational efficiency. This upgrade not only enhances overall performance but also reduces the likelihood of transmission-related failures, ensuring smoother and more reliable operation.



Optimized Mast and Pipeline Design

Refined positioning of pipelines and mast rollers significantly improves the visibility range for operators. This enhancement offers a broader and clearer view of the mast, ensuring better maneuverability and control during material handling tasks, particularly in tight or congested spaces.

Strong Gradeability up to 45% full loaded

Ground clearance capable for mostrough terrain working conditions 220mm

Smallest turning radius 3080mm



Waterproof Connectors

All electrical connectors feature a waterproof design, effectively safeguarding the forklift's electrical system against moisture and environmental elements. This enhancement significantly prolongs the lifespan of electrical components and ensures consistent performance in varied conditions.



Improved Hydraulic System

Incorporating high-quality Italian Manuli hydraulic pipelines minimizes the potential for oil leaks. This upgrade not only enhances reliability but also contributes to smoother and more precise hydraulic operations, ensuring consistent performance in material handling tasks.

Truck Specification

MAVERICK


1	Type		4WD			2WD				
2	Model		R4D18	R4D25	R4D35	R2D18	R2D25	R2D35		
3	Power type		Diesel							
4	Optional type		A3/B3/E3/H3(13/3.5T)							
5	Rated capacity	kg	1800	2500	3500	1800	2500	3500		
6	Load centre	mm	500							
7	Free lift height	mm	165	165	170	165	165	170		
8	Fork size	L×W×T	mm	1070×100×35	1070×122×40	1070×125×45	1070×100×35	1070×122×40	1070×125×45	
9	Fork regulating range	Min./max.	mm	200-1310	250-1310	250-1500	200-1310	250-1310	250-1500	
10	Mast tilt angle	F/R	Deg	10°/12°	10°/12°	10°/12°	10°/12°	10°/12°	10°/12°	
11	Front overhang		mm	580	580	595	580	580	595	
12	Rear overhang		mm	605						
13	Min. ground clearance(Bottom of mast)		mm	220						
14	Overall dimensions	Length to face fork(without fork)	mm	3070	3070	3085	3070	3070	3085	
15		Overall width	mm	1450	1450	1600	1557	1557	1600	
16		Mast lowered height	mm	2230	2230	2325	2230	2230	2325	
17		Mast extended height (with backrest)	mm	4170	4170	4300	4170	4170	4300	
18		Overhead guard height	mm	2260	2260	2280	2260	2260	2280	
19	Turning radius (outside)		mm	3080			2859			
20	Min.right angle aisle width (add load length and clearance)		mm	2630	2630	2690	2680	2680	2690	
21	Speed	Travel (Laden/Unladen)	km/h	19/20	19/20	18/19	19/20	19/20	21/22	
22		Lifting (Laden/Unladen)	mm/sec	540/560	540/560	440/460	540/560	540/560	440/460	
23		Lowering (Laden/Unladen)	mm/sec	440						
24	Max.Drawbar pull (Laden)		KN	38			17			
25	Max.Gradeability (Laden)		%	50	50	45	20	20	16	
26	Tyre	Front		12-16.5-12PR	12-16.5-12PR	14-17.5-14PR	12-16.5-12PR	12-16.5-12PR	14-17.5-14PR	
27		Rear		10.0/75-15.3	10.0/75-15.3	10.0/75-15.3	27×10-12-12PR			
28	Tread	Front	mm	1125	1125	1250	1250	1250	1250	
29		Rear	mm	1198	1198	1198	1205	1205	1205	
30	Wheelbase		mm	1880						
31	Self weight		kg	4465	4850	5460	4115	4500	5180	
32	Weight Distribution	Laden	Front	kg	5465	6600	7750	5145	6000	7700
33			Rear	kg	800	750	1200	770	1000	980
34		Unladen	Front	kg	2015	2180	2500	1865	1810	2070
35			Rear	kg	2450	2670	2960	2250	2690	3110
36	Battery	Voltage/Capacity	V/Ah	12/90						
37	Transmission	Manufacture		China						
38		Stage	F/R		2/1			1/1		
39	Operation pressure (For attachments)		MPa	18.1	18.1	20.5	18.1	18.1	20.5	

Mast Specification

MAVERICK

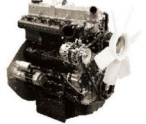
MAST	TYPE	LIFTING HEIGHT ON FORK (mm)	OVERALL HEIGHT MAST LOWERED (mm)	FREE LIFT ON FORKS (mm)		MAST TILTING ANGLE FRONT/REAR	CAPACITY AT MAX.HEIGHT (Kg)		
				WITH Bracket	WITHOUT Bracket		WITHOUT SIDE SHIFT CARRIAGE	WITH SIDE SHIFT CARRIAGE	
Wide View 2 stage mast	M330	1.8T	3300	2380	165	165	10°/12°	1800	1600
		2.5T		2380	165	165	10°/12°	2500	2300
		3.5T		2475	170	170	10°/12°	3500	3300
	M350	1.8T	3500	2485	165	165	10°/12°	1800	1600
		2.5T		2485	165	165	10°/12°	2500	2300
		3.5T		2575	170	170	10°/12°	3500	3300
	M400	1.8T	4000	2780	165	165	10°/12°	1800	1600
		2.5T		2780	165	165	10°/12°	2500	2300
		3.5T		2875	170	170	10°/12°	3400	3200
	M450	1.8T	4500	3030	165	165	10°/12°	1500	1300
		2.5T		3030	165	165	10°/12°	2200	2000
		3.5T		3125	170	170	10°/12°	3100	2900
Full free 3 stage mast	TFM400	1.8T	4000	2075	893	1338	10°/12°	1800	1600
		2.5T		2075	893	1338	10°/12°	2500	2300
		3.5T		2200	895	1340	10°/12°	3400	3200
	TFM435	1.8T	4350	2200	1018	1463	10°/12°	1800	1600
		2.5T		2200	1018	1463	10°/12°	2400	2200
		3.5T		2325	1020	1466	10°/12°	3000	2800
	TFM470	1.8T	4700	2315	1133	1578	10°/12°	1650	1450
		2.5T		2315	1133	1578	10°/12°	2100	1900
		3.5T		2440	1135	1580	10°/12°	2800	2600
	TFM500	1.8T	5000	2450	1268	1716	6/6°	1500	1300
		2.5T		2450	1268	1716	6/6°	1900	1700
		3.5T		2575	1270	1715	6/6°	2600	2400
	TFM600	1.8T	6000	2800	1618	2063	6/6°	800	600
		2.5T		2800	1618	2063	6/6°	1200	1000
		3.5T		2925	1620	2065	6/6°	1900	1700
	TFM650	1.8T	6500	3015	1833	2278	6/6°	500	300
		2.5T		3015	1833	2278	6/6°	700	500
		3.5T		3140	1835	2280	6/6°	1300	1100

A3 Type
YANMAR




Model:L4TNE 98
Rated Output:43/2300kw/r.p.m
Rated Torque:1186-206/1700 N.m/r.p.m
No. of cylinder:4
Bore*Stroke:98mm×110mm
Displacement:3.319L
Range:2.5T/3.5T 2WD/4WD

B3 Type
MITSUBISHI



Model:S4S
Rated Output:35.3/2250kw/r.p.m
Rated Torque:170/1700 N.m/r.p.m
No. of cylinder:4
Bore*Stroke:94mm×120mm
Displacement:3.331L
Range:2.5T/3.5T 2WD/4WD

E3 Type
IS



Model:L4CRV-T6 EUV
Rated Output:42/2300kw/r.p.m
Rated Torque:208/1600 N.m/r.p.m
No. of cylinder:4
Bore*Stroke:86mm×103mm
Displacement:2.505 cc
Range:2.5T/3.5T 2WD/4WD

13 Type
XINCHAI(common rail)



Model:4D32X41-017
Rated Output:34.8/2500kw/r.p.m
Rated Torque:210/1400-1600) N.m/r.p.m
No. of cylinder:4
Bore*Stroke:98mm×105mm
Displacement:3.18L
Range:3.5T 2WD/4WD (common rail)

H3 Type
XINCHAI(common rail)



Model:4D29X41-030
Rated Output:36.8/2500kw/r.p.m
Rated Torque:190/1600-1800) N.m/r.p.m
No. of cylinder:4
Bore*Stroke:93mm×105mm
Displacement:2.85L
Range:2.5T/3.5T 2WD/4WD